

6-1-2022

Section: Mathematics, Statistics, Computer Science, Physics and Astronomy

## The Implications of $N = 2$ Supergravity Cosmology On the Topology of the Calabi-Yau Manifold

Safinaz Salem

*Department of Physics, Faculty of Science, Al-Azhar University, Cairo, Egypt., safinaz.salem@azhar.edu.eg*

Moataz Emam

*Department of Physics, SUNY College at Cortland, Cortland, New York 13045, USA. University of Science and technology, Zewail City of Science and Technology, Giza 12578, Egypt., moataz.emam@cortland.edu*

Hala Salah

*Department of Physics, Faculty of Science, Al-Azhar University, Cairo, Egypt., halahashem.519@azhar.edu.eg*

Follow this and additional works at: <https://absb.researchcommons.org/journal>



Part of the [Life Sciences Commons](#)

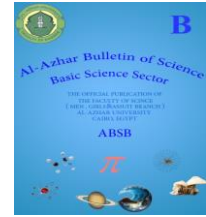
---

### How to Cite This Article

Salem, Safinaz; Emam, Moataz; and Salah, Hala (2022) "The Implications of  $N = 2$  Supergravity Cosmology On the Topology of the Calabi-Yau Manifold," *Al-Azhar Bulletin of Science*: Vol. 33: Iss. 1, Article 6.

DOI: <https://doi.org/10.21608/absb.2022.121518.1172>

This Original Article is brought to you for free and open access by Al-Azhar Bulletin of Science. It has been accepted for inclusion in Al-Azhar Bulletin of Science by an authorized editor of Al-Azhar Bulletin of Science. For more information, please contact [kh\\_Mekheimer@azhar.edu.eg](mailto:kh_Mekheimer@azhar.edu.eg).



## THE IMPLICATIONS OF N=2 SUPERGRAVITY COSMOLOGY ON THE TOPOLOGY OF THE CALABI-YAU MANIFOLD

Safinaz Salem <sup>a,\*</sup>, Moataz H. Emam <sup>b,c</sup>, Hala H. Salah <sup>a</sup>

<sup>a</sup> Department of Physics, Faculty of Science, Al-Azhar University, Cairo, Egypt.

<sup>b</sup> Department of Physics, SUNY College at Cortland, Cortland, New York 13045, USA.

<sup>c</sup> University of Science and Technology, Zewail City of Science and Technology, Giza 12578, Egypt.

\*Corresponding Author: [safinaz.salem@azhar.edu.eg](mailto:safinaz.salem@azhar.edu.eg)

Received: 14 Feb 2022; Revised: 06 Mar 2022; Accepted: 07 Mar 2022; Published: 01 Jun 2022

### ABSTRACT

When  $N = 1$   $D = 11$  supergravity is compactified on CY threefold to  $N = 2$   $D = 5$  supergravity, the action of the last is given in terms of the geometry of the CY manifold space, namely, in terms of the hypermultiplets. There are  $(z^i : i = 1, \dots, h_{2,1})$  complex structure moduli in the moduli space of the CY manifold which's a special *Kähler* manifold with a metric  $G_{i\bar{j}}$ . We solve the field equations of the complex structure moduli with the solution of the Einstein field equations to the moduli velocity norm  $G_{i\bar{j}} z^i \bar{z}^{\bar{j}}$  in the case of a 3- brane filled with radiation, dust, and energy embedded in the bulk of  $D = 5$  supergravity. We get the time dependence of the moduli and the metric. Then we can further deduce the geometry of the moduli space by getting the *Kähler* potential that directly relates to the volume of the CY manifold.

**Keywords:** Supergravity; Cosmology; General relativity; Extra dimensions; Calabi-Yau manifold.

### 1. INTRODUCTION

The compactification of string theory over Calabi-Yau manifolds yields two sets of parameters [1, 2]. The parameters correspond to the structure of Calabi-Yau manifold  $M$  as a complex manifold and the deformation of the *Kähler* metric of the complex structure space. And parameters corresponding to the deformation of  $M$  as a complex *Kähler* manifold  $M_K$  Calabi-Yau 3-folds admit  $H^3$  homology group that can be Hodge decomposed as:

$$H^3 = H^{3,0} \oplus H^{2,1} \oplus H^{1,2} \oplus H^{0,3}. \quad (1)$$

So CY 3-folds have a single  $(3,0)$  cohomology form, where the hodge number  $h_{(3,0)} = \dim(H^{3,0}) = 1$ . We will call the holomorphic volume form as  $\Omega$ ,  $(2,1)$  forms related to  $M_C$ , with a Hodge number  $h_{2,1}$  determines the dimensions of  $M_C$ , and  $(1,2)$  forms related to  $M_K$ , with a Hodge number  $h_{1,2}$  determines the dimensions of  $M_K$ . The deformation of  $M$  can be done by either the deformation of  $M_C$  or the deformation of the *Kähler* form  $K$  of  $M_K$  or both. The *Kähler* form is defined by:

$$K = i g_{m\bar{n}} d\omega^m \wedge d\omega^{\bar{n}}. \quad (2)$$

The holomorphic coordinates  $i, \bar{j} = 1, \dots, m$ , where  $2m$  is the dimension of the manifold. The CY metric is defined by

$$g_{m\bar{n}} = \partial_m \partial_{\bar{n}} \kappa, \quad (3)$$

where  $\kappa$  is the Kähler potential. This paper is devoted to explore the space of the complex structure moduli  $M_C$  that is described by the (2,1) forms

$$\chi_{i|mn\bar{p}} = -\Omega_{mn}^{\bar{r}} \left( \frac{\partial g_{\bar{p}\bar{r}}}{\partial z^i} \right), \quad (4)$$

where  $(z^i: i=1, \dots, h_{2,1})$  are the parameters or the moduli of the complex structure space. Each "i" defines a (2,1) cohomology class. It's important here to declare that  $z^i$  can be treated as complex coordinates that define a **Kähler** metric  $G_{i\bar{j}}$  on  $M_C$  as follows:

$$V_{CY} G_{i\bar{j}} (\delta z^i) (\delta z^{\bar{j}}) = \frac{1}{4} \int_{\mathcal{M}} g^{m\bar{n}} g^{r\bar{p}} (\delta g_{mr}) (\delta g_{\bar{n}\bar{p}}) \quad (5)$$

where  $V_{CY}$  is the CY volume.  $G_{i\bar{j}}$  is related to the Kähler potential by

$$G_{i\bar{j}} = \partial_i \partial_{\bar{j}} \kappa, \quad (6)$$

that leads to a relation between  $\kappa$  and the volume form

$$\int_M \Omega \wedge \bar{\Omega} = -ie^{-\kappa} \quad (7)$$

gives that the Kähler potential is related to the volume of CY manifold simply by [3, 4]

$$\text{Vol}(M) = e^{-\kappa}. \quad (8)$$

We will consider here the Hodge number  $h_{2,1} = 1$ , i.e., we have only one moduli  $z$ , a single Kähler metric component  $G$ , and the dimension of  $M_C$  is unity. In this work we aim to find the time dependence of the scalar quantity  $G_{i\bar{j}} z^i z^{\bar{j}}$  and then to find:

- The variation of the moduli  $z$  and the Kähler metric  $G$  with time.

- The time dependence of the Kähler potential  $\kappa$  and the  $\text{Vol}(M)$ .

Our study is based on  $D = 5$   $N = 2$  supergravity where the universe is modeled as a 3-brane embedded in a 5-dimensional bulk. Previously [9] we have found that the moduli's velocity norm  $G_{i\bar{j}} z^i z^{\bar{j}}$  correlates to the scale factors of the brane universe or the bulk and significantly corresponds to our own universe cosmological time evolution. We have studied a 3-brane filled by radiation as our very early universe and a brane filled by dust, where the Friedmann-like equations have been numerically solved for a wide range of the scale factors' initial conditions. In all different cases  $G_{i\bar{j}} z^i z^{\bar{j}}$  manifested itself as an agent starts with very large values causes an early epoch of rapid expansion (inflation) then it decays fastly to asymptotic values. Here, we will extend that study and add to Einstein's equations a cosmological constant term. We will solve the field equations in the case of a 3-brane filled by radiation, dust and energy (cosmological constant  $\Lambda$ ), while we consider the bulk's cosmological constant  $\tilde{\Lambda}$  vanishes. Then we will use these results to explore the non-trivial topology of the Calabi-Yau manifold. We use the system of units  $M_p = 1$  ( $M_p = 2.4 \times 10^{18}$  GeV  $= (8\pi G)^{-1/2}$ ).

It's worthy to mention that there are many studies about the geometry of the moduli spaces for a Calabi-Yau manifold like [5, 6, 7, 8], where at [5] for instance CY 3-fold was considered as a quintic threefold in the  $P^4$

projection space with  $h_{2,1} = 101$ . However, we don't need here to make this assumption.

So this paper is organized as follows: in section 1 we introduce the  $D = 5$   $N = 2$  supergravity as the dimensional reduction of eleven-dimensional supergravity theory over a Calabi-Yau 3-fold  $M$ . Then we will solve the field equations. In section 2 we will simplify the moduli field equations and the Kähler metric equation and show how they can be solved using the solution of the moduli's velocity norm  $G_{I\bar{J}} z^I z^{\bar{J}}$ . In the same section, we will introduce the time dependence of the Kähler metric, the Kähler potential, and the volume of CY manifold.

### 1. D=5 N=2 supergravity and its solution

The five-dimensional  $N = 2$  supergravity theory contains two sets of matter fields; the vector multiplets, which we set to zero, and our main interest: the *hypermultiplets*. These are composed of the *universal hypermultiplet*  $(\phi, \sigma, \zeta^0, \tilde{\zeta}_0)$ ; where  $\phi$  is the universal axion, and the dilaton is proportional to the volume of the underlying Calabi-Yau manifold  $M$ . The remaining hypermultiplet scalars are  $z^i, z^{\bar{i}}, \zeta^i, \tilde{\zeta}_i; i = 1, \dots, h_{2,1}$ , where the  $z$ 's are the complex structure moduli of  $M$ , and  $h_{2,1}$  is the Hodge number determining the dimensions of the manifold  $M_C$  of the Calabi-Yau's complex structure moduli<sup>1</sup>. The fields  $(\zeta^i, \tilde{\zeta}_i; i = 0, \dots, h_{2,1})$  are the axions, which define a symplectic vector space (see [4] for a review and more references). The axions are

defined as components of the symplectic vector:

$$|\Xi\rangle = \begin{pmatrix} \zeta^I \\ \tilde{\zeta}_I \end{pmatrix} \quad (9)$$

such that the symplectic scalar product is defined by, for example,

$$\langle \Xi | \bar{\Xi} \rangle = \zeta^I \bar{\zeta}_I - \bar{\zeta}_I \zeta^I. \quad (10)$$

A transformation in symplectic space can be defined by

$$\langle d\Xi | \wedge | \star d\Xi \rangle = 2 \langle d\Xi | V \rangle \wedge \langle \bar{V} | \star d\Xi \rangle + 2G^{i\bar{j}} \langle d\Xi | U_{\bar{j}} \rangle \wedge \langle U_i | \star d\Xi \rangle - i \langle d\Xi | \star d\Xi \rangle \quad (11)$$

where  $d$  is the spacetime exterior derivative,  $\star$  is the five dimensional Hodge duality operator, and  $G_{I\bar{J}}$  is a special Kähler metric on  $M_C$ . The symplectic basis vectors  $|V\rangle, |U_i\rangle$ , and their complex conjugates are defined by

$$|V\rangle = e^{\frac{\kappa}{2}} \begin{pmatrix} Z^I \\ F_I \end{pmatrix} \quad |\bar{V}\rangle = e^{\frac{\kappa}{2}} \begin{pmatrix} \bar{Z}^I \\ \bar{F}_I \end{pmatrix} \quad (12)$$

where  $\kappa$  is the Kähler potential on  $M_C$ ,  $(Z, F)$  are the periods of the Calabi-Yau's holomorphic volume form, and

$$\begin{aligned} |U_i\rangle &= |\nabla_i V\rangle = \left| \left[ \partial_i + \frac{1}{2} (\partial_i \mathcal{K}) \right] V \right\rangle \\ |U_{\bar{i}}\rangle &= |\nabla_{\bar{i}} \bar{V}\rangle = \left| \left[ \partial_{\bar{i}} + \frac{1}{2} (\partial_{\bar{i}} \mathcal{K}) \right] \bar{V} \right\rangle \end{aligned} \quad (13)$$

where the derivatives are with respect to the moduli  $(z^i, z^{\bar{i}})$ . In this language, the bosonic part of the action is given by:

$$S_5 = \int_5 [ R \star 1 - \frac{1}{2} d\sigma \wedge \star d\sigma - G_{I\bar{J}} dz^I dz^{\bar{J}} \wedge \star dz^{\bar{J}} + e^\sigma \langle d\Xi | \Lambda | \star d\Xi \rangle - \frac{1}{2} e^{2\sigma} [d\phi + \langle \Xi | d\Xi \rangle] \wedge \star [d\phi + \langle \Xi | d\Xi \rangle] ]. \quad (14)$$

<sup>1</sup>A 'bar' over an index denotes complex conjugation

The usual  $\delta S = 0$  gives the following field equations for the hypermultiplets scalar fields:

$$(\Delta\sigma) \star \mathbf{1} + e^\sigma \langle d\Xi | \underset{\wedge}{\Lambda} \star d\Xi \rangle - e^{2\sigma} [d\phi + \langle \Xi | d\Xi \rangle] \wedge \star [d\phi + \langle \Xi | d\Xi \rangle] = 0 \quad (15)$$

$$(\Delta z^i) \star \mathbf{1} + \Gamma_{jk}^i dz^j \wedge \star dz^k + \frac{1}{2} e^\sigma G^{i\bar{j}} \partial_{\bar{j}} \langle d\Xi | \underset{\wedge}{\Lambda} \star d\Xi \rangle = 0$$

$$(\Delta z^{\bar{i}}) \star \mathbf{1} + \Gamma_{\bar{j}\bar{k}}^{\bar{i}} dz^{\bar{j}} \wedge \star dz^{\bar{k}} + \frac{1}{2} e^\sigma G^{\bar{i}j} \partial_j \langle d\Xi | \underset{\wedge}{\Lambda} \star d\Xi \rangle = 0 \quad (16)$$

$$d^\dagger \{ e^\sigma | \Lambda d\Xi \rangle - e^{2\sigma} [d\phi + \langle \Xi | d\Xi \rangle] | \Xi \rangle \} = 0 \quad (17)$$

$$d^\dagger [e^{2\sigma} d\phi + e^{2\sigma} \langle \Xi | d\Xi \rangle] = 0 \quad (18)$$

where  $d^\dagger$  is the  $D = 5$  adjoint exterior derivative,  $\Delta$  is the Laplace-de Rahm operator and  $\Gamma_{jk}^i$  is a connection on  $M_C$ . The full action is symmetric under the following SUSY transformations:

$$\begin{aligned} \delta_\epsilon \psi^1 &= D\epsilon_1 + \frac{1}{4} \{ i e^\sigma [d\phi + \langle \Xi | d\Xi \rangle] - Y \} \epsilon_1 - e^{\frac{\sigma}{2}} \langle \bar{V} | d\Xi \rangle \epsilon_2 \\ \delta_\epsilon \psi^2 &= D\epsilon_2 - \frac{1}{4} \{ i e^\sigma [d\phi + \langle \Xi | d\Xi \rangle] - Y \} \epsilon_2 + e^{\frac{\sigma}{2}} \langle V | d\Xi \rangle \epsilon_1 \end{aligned} \quad (19)$$

$$\begin{aligned} \delta_\epsilon \xi_1^0 &= e^{\frac{\sigma}{2}} \langle V | \partial_\mu \Xi \rangle \Gamma^\mu \epsilon_1 - \left\{ \frac{1}{2} (\partial_\mu \sigma) - \frac{i}{2} e^\sigma [(\partial_\mu \phi) + \langle \Xi | \partial_\mu \Xi \rangle] \right\} \Gamma^\mu \epsilon_2 \\ \delta_\epsilon \xi_2^0 &= e^{\frac{\sigma}{2}} \langle \bar{V} | \partial_\mu \Xi \rangle \Gamma^\mu \epsilon_2 + \left\{ \frac{1}{2} (\partial_\mu \sigma) + \frac{i}{2} e^\sigma [(\partial_\mu \phi) + \langle \Xi | \partial_\mu \Xi \rangle] \right\} \Gamma^\mu \epsilon_1 \end{aligned} \quad (20)$$

and:

$$\begin{aligned} \delta_\epsilon \xi_1^i &= e^{\frac{\sigma}{2}} e^{\hat{i}j} \langle U_j | \partial_\mu \Xi \rangle \Gamma^\mu \epsilon_1 - e^{\hat{i}j} (\partial_\mu z^{\bar{j}}) \Gamma^\mu \epsilon_2 \\ \delta_\epsilon \xi_2^i &= e^{\frac{\sigma}{2}} e^{\hat{i}\bar{j}} \langle U_{\bar{j}} | \partial_\mu \Xi \rangle \Gamma^\mu \epsilon_2 + e^{\hat{i}j} (\partial_\mu z^j) \Gamma^\mu \epsilon_1 \end{aligned} \quad (21)$$

where  $(\psi^1, \psi^2)$  are the two gravitini and  $(\zeta_1^I, \zeta_2^I)$  are the hyperini. The quantity  $Y$  is defined by:

$$Y = \frac{\bar{Z}^I N_{IJ} dZ^J - Z^I N_{IJ} d\bar{Z}^J}{\bar{Z}^I N_{IJ} Z^J} \quad (22)$$

where  $N_{IJ} = \text{Im}(\partial_I F_J)$ . The  $e$ 's are the beins of the special Kähler metric  $G_{i\bar{j}}$ , the  $\epsilon$ 's are the five-dimensional  $N = 2$  SUSY spinors and the  $\Gamma$ 's are the usual Dirac matrices. The covariant derivative  $D$  is defined by the usual, where the  $\omega$ 's are the spin connections and the hatted indices are frame indices in flat tangent space. Finally, the stress tensor is:

$$\begin{aligned} T_{\mu\nu} &= \frac{1}{2} (\partial_\mu \sigma) (\partial_\nu \sigma) + \frac{1}{4} g_{\mu\nu} (\partial_\alpha \sigma) (\partial^\alpha \sigma) + e^\sigma \langle \partial_\mu \Xi | \underset{\wedge}{\Lambda} | \partial_\nu \Xi \rangle - \frac{1}{2} e^\sigma g_{\mu\nu} \langle \partial_\alpha \Xi | \underset{\wedge}{\Lambda} | \partial^\alpha \Xi \rangle \\ &\quad + \frac{1}{2} e^{2\sigma} [(\partial_\mu \phi) + \langle \Xi | \partial_\mu \Xi \rangle] [(\partial_\nu \phi) + \langle \Xi | \partial_\nu \Xi \rangle] + \frac{1}{4} e^{2\sigma} g_{\mu\nu} [(\partial_\alpha \phi) + \langle \Xi | \partial_\alpha \Xi \rangle] [(\partial^\alpha \phi) + \langle \Xi | \partial^\alpha \Xi \rangle] \\ &\quad + G_{i\bar{j}} (\partial_\mu z^i) (\partial_\nu z^{\bar{j}}) + \frac{1}{2} g_{\mu\nu} G_{i\bar{j}} (\partial_\alpha z^i) (\partial^\alpha z^{\bar{j}}). \end{aligned} \quad (23)$$

As our main interest is bosonic configurations that yields the brane's, and the bulk's scale preserve *some* supersymmetry, the stress tensor can be factors, and  $|G_{i\bar{j}} z^i z^{\bar{j}}|$  as functions in time Fig. simplified by considering the vanishing of the(1). Using suitable fitting functions we get the supersymmetric variations (20, 21); satisfying the solution of the velocity norm of the complex BPS condition on the brane. This gives

$$T_{\mu\nu} = G_{i\bar{j}} (\partial_\mu z^i) (\partial_\nu z^{\bar{j}}) - \frac{1}{2} g_{\mu\nu} G_{i\bar{j}} (\partial_\alpha z^i) (\partial_\alpha z^{\bar{j}}), \quad (24)$$

as was detailed out in [10]. We would like to construct a 3-brane that may be thought of as a flat Robertson-Walker universe embedded in  $D = 5$ . As such we invoke the metric

$$ds^2 = dt^2 + a^2(t)(dr^2 + r^2 d\Omega^2) + b^2(t) dy^2, \quad (25)$$

where  $d\Omega^2 = d\theta^2 + \sin^2(\theta) d\phi^2$ ,  $a^2(t)$  is the usual Robertson-Walker scale factor, and  $b(t)$  is a possible scale factor for the transverse dimension  $y$  (the bulk). The brane is located at  $y = 0$  and we ignore all possible  $y$ -dependence of the warp factors as well as the hypermultiplet bulk fields; effectively only studying the brane close to its location. In this case, Einstein equations  $G_{MN} + \Lambda g_{MN} = T_{MN}$  reduce to the Friedmann-like form:

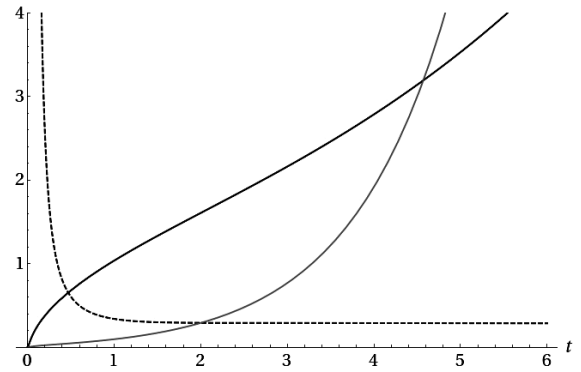
$$\begin{aligned} 3 \left[ \left( \frac{\dot{a}}{a} \right)^2 + \left( \frac{\dot{a}}{a} \right) \left( \frac{\dot{b}}{b} \right) \right] &= G_{i\bar{j}} z^i z^{\bar{j}} + \rho + \Lambda, \\ \left[ 2 \frac{\ddot{a}}{a} + \left( \frac{\dot{a}}{a} \right)^2 + \frac{\ddot{b}}{b} + 2 \left( \frac{\dot{a}}{a} \right) \left( \frac{\dot{b}}{b} \right) \right] &= G_{i\bar{j}} z^i z^{\bar{j}} + p + \Lambda, \\ 3 \left[ \frac{\ddot{a}}{a} + \left( \frac{\dot{a}}{a} \right)^2 \right] &= G_{i\bar{j}} z^i z^{\bar{j}} - \tilde{\Lambda}. \end{aligned} \quad (26)$$

Solving these equations numerically in case the total density equals the dust plus radiation densities  $\rho = \rho_r + \rho_m \propto \frac{1}{a^4} + \frac{1}{a^3}$ , the total pressure equals to the radiation pressure  $p = p_r = \frac{p_r}{3}$ ,  $\Lambda = 1$  (de Sitter space), and  $\tilde{\Lambda} =$

structure moduli given by

$$G_{i\bar{j}} z^i z^{\bar{j}}(t) \simeq -0.5 (t + 0.004)^{-0.9}. \quad (27)$$

The brane's scale factor varies with time exponentially  $a(t) \sim e^{0.2 t}$  which means the brane- universe undergoes an inflationary expansion. While the bulk scale factor is given by  $b(t) \sim 0.06 e^{0.87 t}$ .



**Fig. (1).** The scale factor  $a$  is represented by the solid curve,  $b$  by the grey curve, while  $G_{i\bar{j}} z^i z^{\bar{j}}$  is shown dashed.  $\Lambda = 1$ ,  $\tilde{\Lambda} = 0$ , and for initial conditions  $a[0] = a'[0] = b[0] = b'[0] = 0$ .

As seen the solution shows a correlation between the scale factors of the brane universe and the bulk and the moduli norm  $G_{i\bar{j}} z^i z^{\bar{j}}$ .

## 2. Calabi-Yau manifold complex structure space

The field equations of the moduli  $z^i$  and  $z^{\bar{j}}$  (16) can be simplified using the BPS condition [10]:

$$\begin{aligned} e^\sigma \langle \Xi | \Lambda | \star d\Xi \rangle &= \frac{1}{2} d\sigma \wedge \star d\sigma + \frac{1}{2} e^{2\sigma} [d\phi + \\ \langle \Xi | d\Xi \rangle] \wedge \star [d\phi + \langle \Xi | d\Xi \rangle] &+ 2G_{i\bar{j}} dz^i \wedge \star dz^{\bar{j}}, \end{aligned} \quad (28)$$

so that they can be written as

$$\begin{aligned} (\Delta z^i) \star 1 + \Gamma_{jk}^i dz^j \wedge \star dz^k + \\ G^{ij} (\partial_j G_{i\bar{k}}) dz^l \wedge \star dz^{\bar{k}} = 0, \\ (\Delta z^{\bar{i}}) \star 1 + \Gamma_{\bar{j}\bar{k}}^{\bar{i}} dz^{\bar{j}} \wedge \star dz^{\bar{k}} + \\ G^{\bar{i}\bar{j}} (\partial_{\bar{j}} G_{\bar{i}k}) dz^l \wedge \star dz^{\bar{k}} = 0, \end{aligned} \quad (29)$$

Dropping the differential forms formulation, we get:

$$\begin{aligned} \nabla^2 z^i + \Gamma_{jk}^i \partial_\mu z^j \partial^\mu dz^k + \\ G^{ij} (\partial_j G_{i\bar{k}}) \partial_\mu dz^l \partial^\mu dz^{\bar{k}} = 0, \\ \nabla^2 z^{\bar{i}} + \Gamma_{\bar{j}\bar{k}}^{\bar{i}} \partial_\mu dz^{\bar{j}} \partial^\mu dz^{\bar{k}} + \\ G^{\bar{i}\bar{j}} (\partial_{\bar{j}} G_{\bar{i}k}) \partial_\mu z^l \partial^\mu dz^{\bar{k}} = 0. \end{aligned} \quad (30)$$

The connections or the Christoffel symbols are related to the metric by [4]:

$$\Gamma_{jk}^i = G^{i\bar{p}} \partial_j G_{k\bar{p}}, \quad \Gamma_{\bar{j}\bar{k}}^{\bar{i}} = G^{p\bar{i}} \partial_{\bar{j}} G_{\bar{k}p}, \quad (31)$$

substitute in (30), we get:

$$\begin{aligned} \nabla^2 z^i + G^{i\bar{p}} \partial_j G_{k\bar{p}} \partial_\mu z^j \partial^\mu dz^k + \\ G^{ij} (\partial_j G_{i\bar{k}}) \partial_\mu dz^l \partial^\mu dz^{\bar{k}} = 0, \\ \nabla^2 z^{\bar{i}} + G^{p\bar{i}} \partial_{\bar{j}} G_{\bar{k}p} \partial_\mu dz^{\bar{j}} \partial^\mu dz^{\bar{k}} + \\ G^{\bar{i}\bar{j}} (\partial_{\bar{j}} G_{\bar{i}k}) \partial_\mu z^l \partial^\mu dz^{\bar{k}} = 0. \end{aligned} \quad (32)$$

The moduli are independent of the 3-spatial dimensions. And consider the Hodge number  $h_{2,1} = 1$ , which means we have only one moduli  $z$ , its complex conjugate  $z^*$ , a single Kähler metric component  $G$ , and the dimension of the moduli space  $M_C$  is unity. So that (32) simplify to:

$$\begin{aligned} \ddot{z} + \frac{1}{G} (\partial_z G) \dot{z}^2 + \frac{1}{G} (\partial_{z^*} G) \dot{z} \dot{z}^* = 0, \\ \ddot{z}^* + \frac{1}{G^*} (\partial_{z^*} G^*) \dot{z}^{*2} + \frac{1}{G^*} (\partial_z G) \dot{z} \dot{z}^* = 0 \end{aligned} \quad (33).$$

Also, from the Robertson-Walker like metric (25), the moduli field equations:

$$\ddot{z} + \frac{1}{G} (\partial_z G) \dot{z}^2 + \frac{1}{G} (\partial_{z^*} G) \dot{z} \dot{z}^* = 0, \quad (34)$$

$$\ddot{z}^* + \frac{1}{G^*} (\partial_{z^*} G^*) \dot{z}^{*2} + \frac{1}{G^*} (\partial_z G) \dot{z} \dot{z}^* = 0. \quad (35)$$

Solving the moduli field equation Equ. (34) with Equ. (27), gives the moduli's variation with time:

$$z(t) \simeq C + \frac{0.001+0.25t}{(1+250t)^{0.6}}. \quad (36)$$

For  $z[0] = 0$ .  $C$  is the integration constant. We take  $z[0] = 1$ , and  $C \sim 1$ . Also, we have made a further approximation here by considering the moduli real. In Fig. (2- left) and (2- right) the moduli and the moduli velocity are plotted versus time, respectively. The Kähler metric can be directly obtained by substituting the solution of  $\dot{z}$  in Equ. (27). In Fig. (3left) one component of the metric  $G_{i\bar{j}}$  multiplied by a factor  $10^{-2}$  is plotted versus time. Generally speaking, the Kähler potential is given by:

$$\kappa = \ln(1 + z_i z^{\bar{i}}) = \ln(1 + \delta_{i\bar{j}} z^i z^{\bar{j}}), \quad (37)$$

in which the Kähler metric Equ. (6) has been driven. We will use Equ. (6) to get  $\kappa$  as a function in time. According to our approximation, it can be written as:

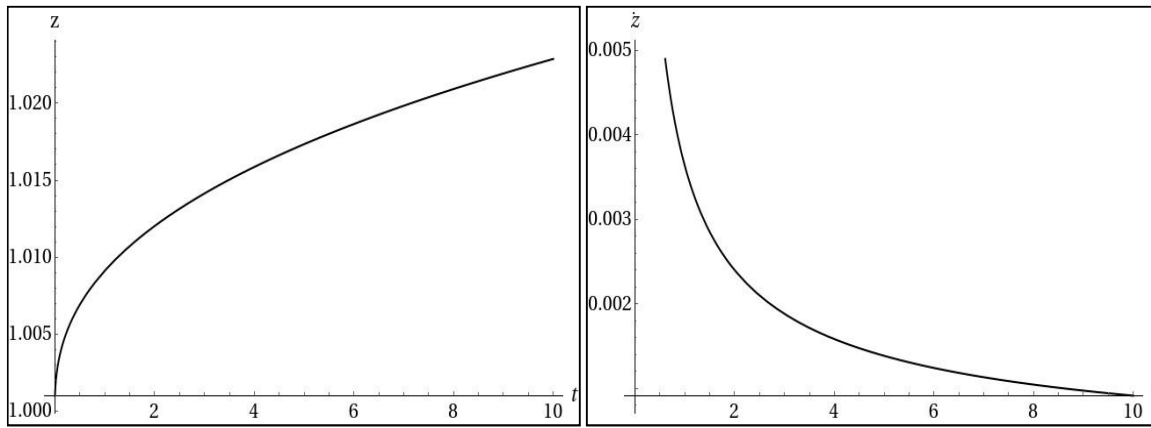
$$G = \partial_z \partial_{z^*} \kappa. \quad (38)$$

Let all fields depend on time, it becomes:

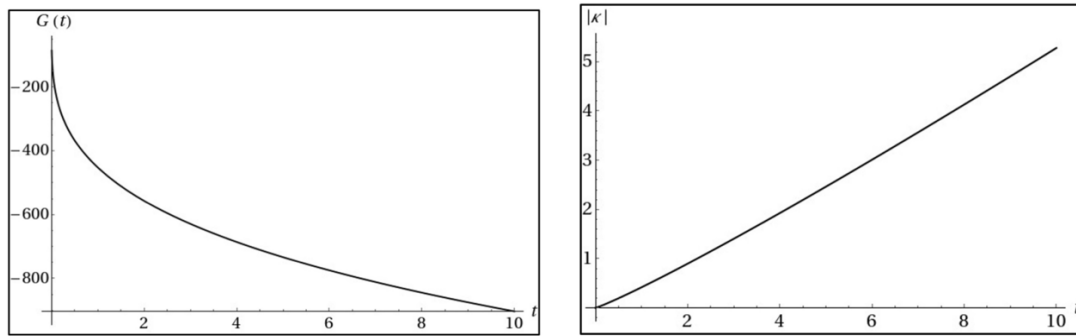
$$G(t) = \frac{\partial}{\partial t} \left( \frac{1}{z} \frac{k}{z^*} \right). \quad (39)$$

Solving for the Kähler potential, yields:

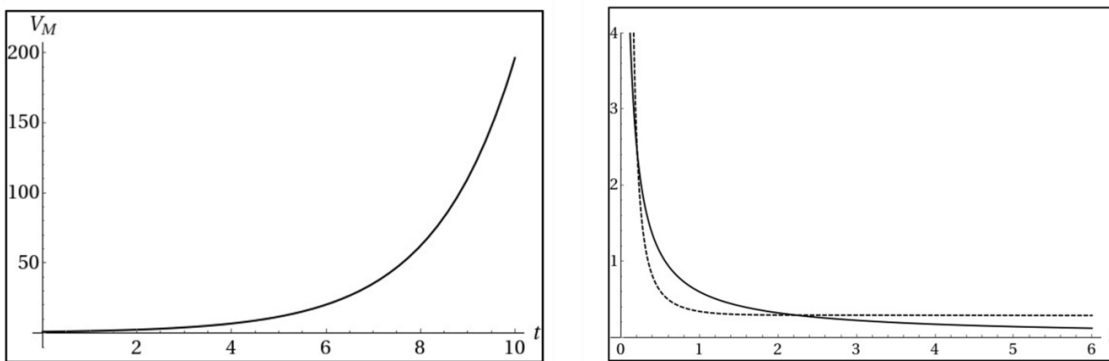
$$\kappa(t) = -(0.45t + 0.008t^2). \quad (40)$$



**Fig. (2).** (Left panel): The moduli is plotted versus time. (Right panel): The moduli velocity is plotted versus time for  $C=1$ , and in case of radiation, dust and  $\Lambda$  filled brane with  $\Lambda = 1$ , and  $\tilde{\Lambda} = 0$ .



**Fig. (3).** (Left panel): One component of the Kähler metric multiplied by a factor  $10^{-2}$  is plotted versus time. (Right panel): The modulus of the Kähler potential of  $M_C$  is plotted versus time.



**Fig. (4).** (Left panel): The volume of the Calabi-Yau manifold plotted versus time. The Hodge number  $h_{2,1} = 1$ . (Right panel): Numeric and analytic  $G_{i\bar{j}} z^i z^{\bar{j}}$  versus time in solid and dashed lines, respectively. The Hodge number  $h_{2,1} = 1$ .



Fig. (3- right) shows the absolute value of the potential plotted versus time. According to Equ. (4) the volume of the CY manifold  $M$  can be obtained as long as the Kähler potential is known. Fig. (4- left) shows the volume of the Calabi-Yau manifold plotted versus time. As seen, it increases with time. For the sake of comparison, Fig. (4- right) shows  $G_{ij} z^i z^{\bar{j}}$  plotted versus time as it's obtained directly from the numeric solution of the field equations (26) without any approximations a long a side as it's obtained when solving Equ. (27) with Equ. (36).

### 3. CONCLUSION

Exploring the non-trivial topology of the Calabi-Yau manifold is still a highly demanding quest in theoretical physics. The importance of the Calabi-Yau manifold arises from its vital role in the compactification of many higher dimensional theories. Like when compactifying  $D = 11$  supergravity to  $N = 2, D = 5$  supergravity over CY 3-fold. In this work we have studied a 3-brane embedded in the bulk of  $D = 5$  supergravity, we have solved the Friedmann-like equations in the case of a brane filled with radiation, dust, and energy. We have shown that in this case, the time evolution of the 3-brane coincides with the time evolution of our universe, where the moduli's velocity norm  $G_{ij} z^i z^{\bar{j}}$  strongly correlates to the scale factor of the brane universe. That means the cosmology of our universe can be interpreted only by the effects of the bulk of a higher dimensional theory. This explanation needs more analysis and initial conditions to

be verified which we keep to a further study. We then used the solutions to explore the complex structure space of the CY manifold. Since we knew the time behavior of  $G_{ij} z^i z^{\bar{j}}$ , we have solved the moduli field equation to get the time dependence of the complex structure moduli, the Kähler metric, the Kähler potential, and the volume of the Calabi-Yau manifold. That's for a Hodge number  $h_{2,1} = 1$ , which means the dimensions of  $M_C$  are unity and there is a single moduli, since  $z^i$  are considered the coordinates that define  $M_C$ . The time dependence of the Kähler potential is negative like the Kähler metric. The absolute value of the potential increases with time. Also, the volume of the CY manifold infinitely increases with time which is a deduction that the brane- world and the bulk are keeping expanding with time.

### Acknowledgment

The authors thank the department of physics, faculty of science at Al-Azhar University, girls' branch, Cairo, Egypt.

### REFERENCES

- [1] Douglas Michael R. Calabi-Yau metrics and string compactification. Nucl. Phys. B. 2015; **898**: 667.
- [2] Green Brain R. String theory on Calabi-Yau manifolds. Theoretical Advanced Study Institute in Elementary Particle Physics (TASI 96 ). 1996: 543.
- [3] Candelas Philip, De la Ossa Xenia. Moduli space of Calabi-Yau manifolds. XIII International School of Theoretical Physics: The Standard Model and Beyond. 1989.
- [4] Emam Moataz H. The many symmetries of Calabi-Yau compactification. Class. Quant. Grav. 2010; 27: 163001.

- [5] Candelas Philip, De la Ossa Xenii, Green Paul S, Parkes Linda. A Pair of Calabi-Yau manifolds as an exactly soluble superconformal field theory. Nucl. Phys. B. 1991; **359**: 2174.
- [6] Berglund P, Candelas P, De la Ossa X, Font A, Huebsch T, Jancic D, Quevedo F. Periods for Calabi-Yau and Landau-Ginzburg vacua. Nucl. Phys. B; 1991; **355**: 455.
- [7] Aleshkin Konstantin, Belavin Alexander. A new approach for computing the geometry of the moduli spaces for a Calabi-Yau manifold. J. Phys. A. 2018; **51**(5): 05540.
- [8] Aleshkin Konstantin, Belavin Alexander. Special geometry on the 101 dimensional moduli space of the quintic threefold. JHEP. 2018; 1803: 018.
- [9] Emam Moataz H, Salah H H, Salem Safinaz. Brane-worlds and the Calabi – Yau complex structure moduli. Class. Quant. Grav. 2020; **37** (19 ): 195007.
- [10] Emam Moataz H. BPS brane cosmology in N = 2 supergravity. Class. Quant. Grav. 2015; 32 (18) :185014.

## تطبيقات الجاذبية الفائقة $N=2$ , $D=5$ على طوبولوجيا نسيج Calabi-Yau

صافيناز سالم<sup>(1)</sup> ، معتز امام<sup>(2,3)</sup>، هالة هاشم صلاح<sup>(1)</sup>

1. قسم الفيزياء ، كلية العلوم ، جامعة الازهر (فرع بنات) ، القاهرة، مصر
2. قسم الفيزياء ، جامعة ساني بكورتلاند ، نيويورك ، الولايات المتحدة الامريكية.
3. جامعة زويل للعلوم والتكنولوجيا ، الجيزة ، القاهرة.

### المخلص

عند تقليل أبعاد الجاذبية الفائقة  $N=1$  ,  $D=11$  إلى الجاذبية الفائقة  $N=2$  ,  $D=5$  باستخدام نسيج Calabi-Yau فإن لاجرائج النظرية الجديدة يعتمد تماما على طوبولوجيا نسيج Calabi-Yau ، حرفيا يعتمد على حقول كمية تسمى Moduli تعرف بأنها احداثيات نسيج Calabi-Yau المعقد . عند حل معادلات المجال للنظرية فإننا نستطيع إيجاد سلوك ال Moduli مع الزمن وبالتالي إيجاد جميع خصائص نسيج Calabi-Yau ، أي إيجاد السلوك الزمني لل metric الخاصة به والسلوك الزمني لل potentiel الخاص به وكذلك السلوك الزمني لحجم النسيج. في هذا السياق ندرس كوننا المعروف كسطح ثلاثي الأبعاد (مكانية) موجود في زمكان خماسي الأبعاد. لحل معادلات المجال فإننا اعتبرنا هذا السطح الثلاثي ملئاً بإشعاع ومادة عادية وطاقة تسبب في تمدد متسارع لهذا السطح تماما مثل التطور الكوني لعالمنا.