

6-1-2008

Section: Chemistry

OPEN-CIRCUIT AND POTENTIODYNAMIC STUDY ON THE ELECTROCHEMICAL BEHAVIOR OF TIN ELECTRODE IN SULPHURIC ACID AND SODIUM HYDROXIDE SOLUTIONS

R. ABOU SHAHBA

Chemistry Department, Faculty of Science (for Girls), AL- Azhar University, Cairo, Egypt.

A. AHMED

Chemistry Department, Faculty of Science (for Girls), AL- Azhar University, Cairo, Egypt.

E. ATTIA

Chemistry Department, Faculty of Science (for Girls), AL- Azhar University, Cairo, Egypt.

A. EL-SHENNAWY

Chemistry Department, Faculty of Science (for Girls), AL- Azhar University, Cairo, Egypt.

Follow this and additional works at: <https://absb.researchcommons.org/journal>

 Part of the [Life Sciences Commons](#)

How to Cite This Article

ABOU SHAHBA, R.; AHMED, A.; ATTIA, E.; and EL-SHENNAWY, A. (2008) "OPEN-CIRCUIT AND POTENTIODYNAMIC STUDY ON THE ELECTROCHEMICAL BEHAVIOR OF TIN ELECTRODE IN SULPHURIC ACID AND SODIUM HYDROXIDE SOLUTIONS," *Al-Azhar Bulletin of Science*: Vol. 19: Iss. 1, Article 24.
DOI: <https://doi.org/10.21608/absb.2008.10493>

This Original Article is brought to you for free and open access by Al-Azhar Bulletin of Science. It has been accepted for inclusion in Al-Azhar Bulletin of Science by an authorized editor of Al-Azhar Bulletin of Science. For more information, please contact kh_Mekheimer@azhar.edu.eg.

OPEN-CIRCUIT AND POTENTIODYNAMIC STUDY ON THE ELECTROCHEMICAL BEHAVIOR OF TIN ELECTRODE IN SULPHURIC ACID AND SODIUM HYDROXIDE SOLUTIONS

R. M. ABOU SHAHBA, A. S. I. AHMED, E. M. ATTIA AND A. E. EL-SHENNAWY

Chemistry Department, Faculty of Science (for Girls), AL- Azhar University, Cairo, Egypt.

Abstract

The electrochemical behavior of tin electrode in H₂SO₄ and NaOH solutions is studied in details using open- circuit potential measurements and potentiodynamic polarization techniques. The identification of the elements present in the surface of specimen after immersion in the two test solutions is performed using an energy dispersive X-ray analysis (EDX).

Open- circuit potential measurements show that for tin electrode in low concentrations of H₂SO₄ and NaOH solutions the passivity was increased with dilution. At higher concentrations, dissolution of the pre-immersion oxide film occurs in which the corrosivity of NaOH is higher than that of H₂SO₄ solutions. Passivation of tin in NaOH solutions appears to take place in two steps. The first involves formation of SnO or Sn(OH)₂, in the second step oxidation to Sn(OH)₄ takes place.

Potentiodynamic polarization techniques illustrate that the dissolution of tin in sulphuric acid occurs through the participation of both OH⁻ and SO₄²⁻ ions through an intermediate of (SnHSO₄OH) species. The potentiodynamic curves for tin in sodium hydroxide solutions exhibits an active/passive transition. The active dissolution region involves two anodic peaks prior to permanent passivity. The first anodic peak is due to the formation of Sn(OH)₂ while the second peak corresponded to the formation of Sn(OH)₄ in addition to the formation of the soluble stannate ions. Dehydration of unstable Sn(OH)₄ to the stable SnO₂ can occur on the tin electrode during the potential sweep to positive direction. Increasing concentrations of H₂SO₄ and NaOH solutions led to enhance the corrosion current (*i*_{corr.}), and corrosion potentials (*E*_{corr.}) shift towards more negative values. EDX analysis showed that Sn % present on the surface of tin electrode in 1M of each of NaOH and H₂SO₄ solutions was 91.82 and 83.52 respectively.

Introduction

Tin is used to best advantage in combination with other metals, in alloys⁽¹⁻⁴⁾ or protective coatings⁽⁵⁻⁷⁾. Bronzes, which are copper-tin-base alloys, are used in bearings, valves, and pipe settings as well as in traditional applications such as bill making^(8,9). Electrochemical techniques have brought valuable information on the growth kinetics and electronic properties of the passive oxide film. Particularly,

classical electrochemical techniques such as cyclic voltammetry, electrochemical impedance spectroscopy, potentiostatic, potentiodynamic, galvanostatic and galvanodynamic are still useful tools to investigate passive film formation, surface chemical equilibria as well as film electronic properties⁽⁴⁰⁾. The inhibitions of corrosion of Sn are the subject of tremendous technological importance due to the increased industrial applications of this metal. The influence of some organic acids was studied⁽¹¹⁻¹⁸⁾. Inorganic and halogen acids such as HCl, HNO₃, H₂SO₄ and H₃PO₄ are also studied.⁽¹⁹⁻²¹⁾ A wide studied in different alkaline solutions had take place^(22,23). Anodic polarization in H₂SO₄ resulted in a dark-brown film on the Sn electrode (apparently SnO₂)⁽²⁴⁾. Primary passivity of tin is attained in NaOH solutions when the metal is covered with a film of Sn(OH)₂ or SnO. Permanent passivity sets in when Sn(OH)₄ forms as a continuous layer on the electrode surface^(25,26). The pitting sensitivity of tin in a synthetic medium similar to industrial water was not affected by pH variation⁽²⁷⁾. Addition of oxo-anions to the synthetic medium leads to retard a breakdown of passivation and the inhibition of pitting process of tin⁽²⁸⁾. The object of the present work is to study the anodic behavior of tin electrode in H₂SO₄ acid and NaOH solutions by open-circuit potential measurements and potentiodynamic polarization method.

Experimental

Materials

The electrical circuit, electrolytic cell and the details of the experimental procedures are essentially the same as those described elsewhere⁽¹⁷⁾. The electrode used in the present study was spectroscopically pure tin rod electrode (99.999 % pure) with an apparent exposed area of 2 cm². Tin rod was fixed to glass tubing with araldite adhesive. The electrical contact was made through a thick copper wire soldered to the inner side of the electrode. Prior to each experiment, the surface of the working electrode was performed by polishing with different grades emery papers, then diamond paste (1μm), washing by distilled water, drying and quickly inserted in the cell. The counter electrode was a platinum sheet. The potentials were recorded relative to a saturated calomel electrode (SCE).

Adopted techniques

Open-circuit potential measurements

The potential of tin electrode was measured against saturated calomel electrode (SCE) in different concentrations of test solutions ranging from (10⁻⁵ - 2M). All measurements were carried out in conventional glass cell at (25±2°C). The potential

was recorded as a function of time till steady - state values were reached by using electronic multimeter (Type E scord- EDM-2116).

Potentiodynamic polarization measurements

The polarization scans were performed with electronic potentiostat (Volt Lab PGZ 301Dy-namic EIS Voltammetry). The anodic E/I curves for all solutions were swept from -1.5V to +1.5V at scan rate 20 mV/s. All measurements were performed in freshly prepared solutions at room temperature ($25 \pm 2^\circ\text{C}$).

Energy dispersive X-ray analysis (EDX).

The apparatus is model Brukey axs - $\Delta 8$ Advance and having time constant 2 seconds, and the range count per second is 2×10^3 . During X- ray diffraction analysis, the X- ray beam falls on the plane of the crystal, after reflection, the beam can be detected and converted to peaks. The intensity of the peaks can give an idea about the percentage abundance of the different compounds.

Results and Discussion

Open-circuit potential measurements:

The behavior of tin electrode in different concentrations of H_2SO_4 and NaOH solutions was studied (Figures 1 and 2). In low concentrations of H_2SO_4 (10^{-5} to $5 \times 10^{-4}\text{M}$) and NaOH (10^{-5} and 10^{-4}M), the potential was shifted with time towards more positive values. This was in accordance with Evans⁽²⁹⁾ where the oxide film was self- healing. Thus at low concentrations, the passivity increased with decreasing concentration, and the potential- time curves are characterized by a rapid rise in potential followed by steady state potential values (E_{ss}). The steady state portion at these low concentrations might be attributed to the formation of stannic oxide (SnO_2) on the electrode surface. This increases the resistance of anodic area and led to passivation. However, at higher concentrations of acid (10^{-2} to 2M) and base (5×10^{-4} to 2M) solutions, the potential drifted with time towards more negative values denoting the destruction of the pre-immersion oxide film formed on the surface of the electrode.

Within the whole test solutions and concentrations, the immersion potential values lay negative side of the hydrogen/ hydrogen ion electrode system. This may indicate that the nature of the cathodic reaction occurring at the electrode surface is mainly hydrogen ion discharge (Equation 1) and the depolarization effect of oxygen was less manifested.

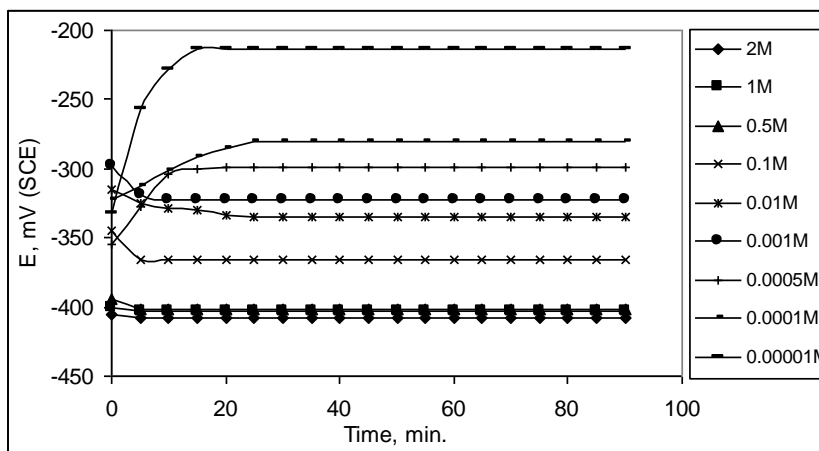


Figure (1): Variation of open-circuit potential of tin electrode in H₂SO₄ solutions of various concentrations as a function of time

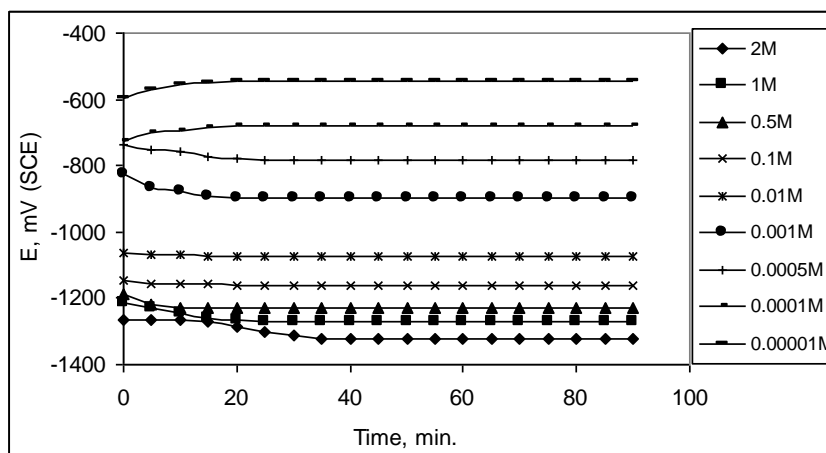


Figure (2): Variation of open-circuit potential of tin electrode in NaOH solutions of various concentrations as a function of time

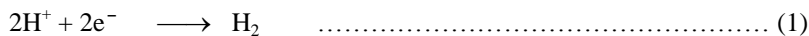


Figure 3 demonstrated the variation of the steady state potentials, E_{SS} , with the logarithm of the molar concentration of test solutions. Invariably straight lines are obtained satisfying the equation:

$$E_{SS} = (a) - (b) \log C \quad \dots\dots\dots (2)$$

where; (a) and (b) are constants depending on the type of test solutions. In equation 2, (a) represented the potentials of 1 M concentration, being -403 , and -1269 mV for H₂SO₄ and NaOH solutions respectively.

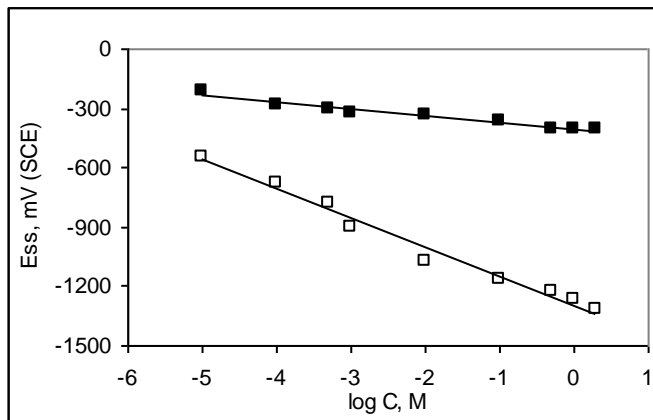


Figure (3): E_{ss}- logC relations for: ■ H₂SO₄ and □ NaOH solutions

According to the change of the steady state potentials with the logarithmic concentration, the studied solutions retarded the corrosion of tin electrode as the concentration decreased. The more negative values of steady state potential, the more aggressive is the corresponding solution. Subsequently the corrosivity of NaOH solution is assumed to be higher than that of H₂SO₄ solution.

Tin will resist corrosion perfectly in slightly alkaline solutions, while it will be corroded in highly alkaline solutions⁽³⁰⁾. However, tin begins to corrode in alkaline solutions only when the pH is sufficiently high to dissolve the oxide film (SnO₂) already existing on the metal ⁽²⁴⁾.

A plot of steady - state potential values E_{SS} as a function of pH of the alkaline solution shows a straight line and E_{SS} shift to more negative values by increasing the pH of solution (Figure 4). The straight line was found to follow the following relationship:

$$E_{SS} = \alpha - \beta \text{ pH} \dots\dots\dots (3)$$

Where α is the pH independent potential value of E_{SS} obtained by the extrapolation of the linear relation to pH = 0. β is the slope of the linear relation presented in the Figure. The value of α was found to be equal to 1.1 V for Sn electrode. This extrapolated value of the constant α is an indication that the metal surface is covered by a barrier film which consists most probably of a mixed oxide.

According to the familiar Nernst equation, a pH indicator electrode will have a potential, which would be given by:

$$E = E_o - \frac{0.059 \text{ pH}}{n} \dots\dots\dots(4)$$

Where E is the steady state potential of that electrode at 25°C, E_o is the pH independent standard electrode potential of the electrode reaction. The value of n corresponds to the number of electrons involved in the electrochemical process. For Sn electrode the slope of the E_{SS} vs. pH linear relation amounts to 0.182 V/pH. In regions where the OH⁻ ions are accessible to the electrode surface, solvation of the electrode occurs and deviation from the n = 1 process is observed. Substituting the values obtained from the linear relation in Figure 4, then

$$E_{SS} = 1.1 - 0.182 \text{ pH} \dots\dots\dots(5)$$

This means that the number of electrons n is equal to ~ 0.3. Equation (5) is not identical with any of the equations given in the literature for the Sn /aqueous solution system. Most likely the electrode potential represents a mixed potential.

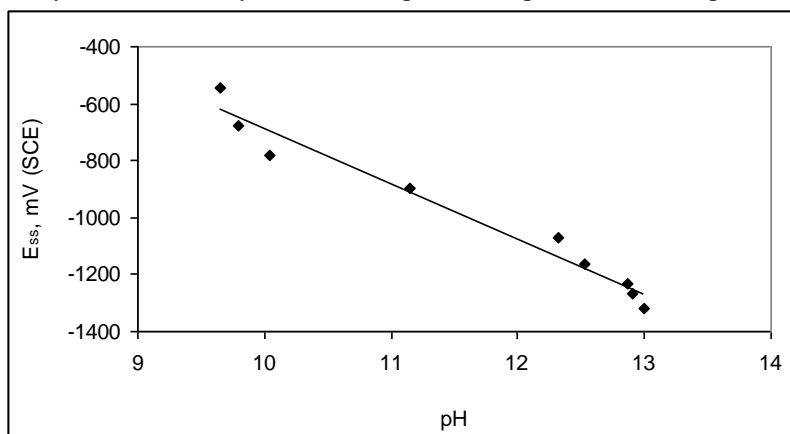
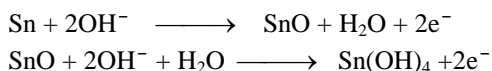
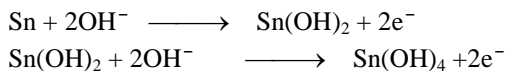


Figure (4): Steady state potential of Sn electrode as a function of pH of the NaOH solutions

The passivation of tin in slightly alkaline solutions appears to take place in two steps. The first step undoubtedly involves SnO or Sn(OH)₂ (black in color) but from the available thermodynamic data it was not possible to distinguish between the two reactions. In the second step oxidation to Sn(OH)₄ take place which remains stable, until it probably breaks down into metastannic acid just prior to the commencement of oxygen evolution. The proposed mechanism may be ⁽³¹⁾:



or



Potentiodynamic polarization measurements

Potentiodynamic behavior of tin electrode in sulphuric acid solutions

The E–I curves of Figure (5) illustrated clearly that the current increased sharply by increasing the potential at high concentrations of acid. In low concentrations, the current increased smoothly by increasing potential to the limiting current corresponding to the passive region. With respect to (H^+) and (SO_4^{2-}) ions, it was suggested that (SO_4^{2-}) ion participated in the tin dissolution reaction.

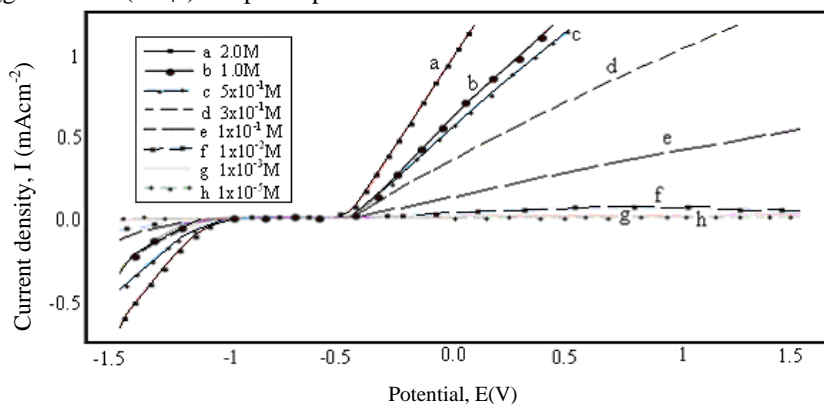
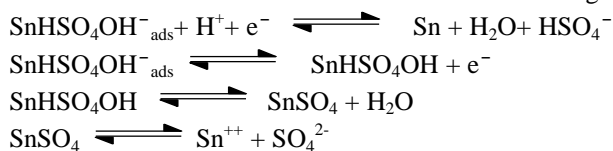


Figure (5): Potentiodynamic anodic and cathodic polarization curves of tin electrode in different concentrations of H_2SO_4 acid solutions

In sulphuric acid solutions, the Sn^{2+} ion may form complex anions. There is some dispute about the nature of these anions. Both $\text{Sn}[\text{Sn}(\text{SO}_4)_2]$ and $\text{H}_2\text{Sn}_2(\text{SO}_4)_3$ groups have been proposed⁽³²⁾. Another authors⁽³³⁾ proposed $\text{Sn}(\text{OH})^+$ ion and $[\text{Sn}(\text{OH})\text{SO}_4]^-$ complexes. There is an equilibrium between Sn^{2+} and $[\text{Sn}(\text{OH})_4]^{2-}$ in dilute sulphuric acid⁽³²⁾. These results indicated that both OH^- and sulphate groups could interfere with the electrode reaction.

The reaction scheme for anodic tin dissolution can be given as⁽³⁴⁾:



From the above reactions, it can be concluded that the tin dissolution in sulphuric acid occurs through the participation of both OH^- and SO_4^{2-} ions through an intermediate of $(\text{SnHSO}_4\text{OH})$ species⁽³⁴⁾. Table 1 illustrated the electrochemical parameters calculated from Tafel relations in sulphuric acid solutions. Decreasing concentration led to decrease of the corrosion rate. Also the corrosion potential shifted to more positive values indicating passivation with dilution.

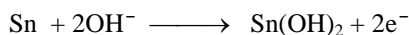
Table(1): The electrochemical parameters of tin electrode in different concentrations of H_2SO_4 solutions.

Conc. M	$E_{\text{corr.}}$ mV(SCE)	$i_{\text{corr.}}$ mA/cm ²	Tafel Slopes (mV/ decade)		Corrosion rate mm/y
			B_a	B_c	
2.0	-979.0	0.700	153	-104	7.98
1.0	-970.6	0.660	426	-123	7.92
5×10^{-1}	-843.4	0.300	131	-114	3.56
3×10^{-1}	-824.0	0.300	274	-125	3.40
1×10^{-1}	-563.4	0.330	63.0	-685	3.92
1×10^{-2}	-517.0	0.310	125	-420	3.68
1×10^{-3}	-486.9	0.274	292	-113	3.63
1×10^{-5}	-474.0	0.195	400	-328	2.32

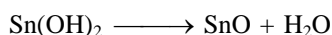
Potentiodynamic behavior of tin electrode in sodium hydroxide solutions

Figure 6 represents typical potentiodynamic E/I response for a tin electrode in different concentrations of NaOH (1×10^{-5} - 2 M) solutions. The active dissolution region involves two anodic peaks prior to permanent passive region.

The first anodic peak which located at ≈ -900 mV is due to the formation of $\text{Sn}(\text{OH})_2$ according to the reaction⁽³⁵⁾ :



Two further reactions may take place within the potential range of the first peak; one yielding dehydration of $\text{Sn}(\text{OH})_2$ and formation of SnO :



and the other involving the formation of soluble stannite species,



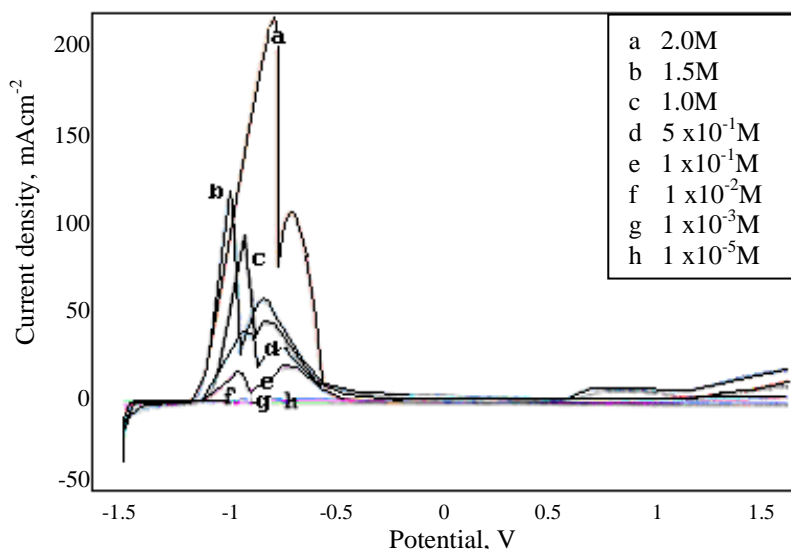
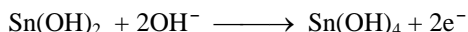
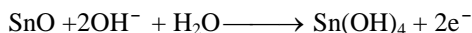


Figure (6): Potentiodynamic anodic and cathodic polarization curves of tin Electrode in different concentrations of NaOH solutions

The second anodic peak located at ≈ -730 mV corresponding to the formation of $\text{Sn}(\text{OH})_4$ according to the following reactions ⁽³⁵⁾:



and/or



in addition to the formation of the soluble stannate ions,



Dehydration of the thermodynamically unstable $\text{Sn}(\text{OH})_4$ to the corresponding stable SnO_2 can occur on the tin electrode during the potential sweep to positive direction ⁽³⁰⁾.

When the surface is covered with the passive film, the dissolution current falls to a small value, denoting the onset of permanent passivity. Previous works confirmed the duplex nature of the passive film which consisted of both SnO and SnO_2 ⁽³⁶⁾. From the relation between the potential and $\log i$ (Tafel relation), the electrochemical parameters are reported in Table 2.

Table (2): The electrochemical parameters of tin electrode in different concentrations of NaOH solutions

Conc. M	$E_{\text{corr.}}$ mV(SCE)	$i_{\text{corr.}}$ mA/cm ²	Tafel Slopes		Corrosion rate mm/y
			B_a (mV/ dec.)	B_c (mV/ dec.)	
2.0	-1194	1.183	68.0	-381.3	14.03
1.5	-1163	1.022	61.4	-314.0	12.12
1.0	-1158	0.549	66.6	-362.8	6.51
5×10^{-1}	-1145	0.370	85.3	-449.8	4.42
1×10^{-1}	-1137	0.091	64.0	-333.6	1.08
1×10^{-2}	-1093	0.042	66.0	-293.0	0.50
1×10^{-3}	-846	0.037	217.0	-313.0	0.44
1×10^{-5}	-797	0.005	0.3	-347.0	0.06

From the curves and Table 2 we can concluded that: increasing the concentration of NaOH solutions enhances the peaks current (corrosion current, $i_{\text{corr.}}$), and the corrosion potential, $E_{\text{corr.}}$, shift towards more negative values. Also corrosion rates were increased by increasing NaOH concentration.

By comparing the corrosion rates of the two test solutions it was illustrated that NaOH solutions are more corrosive than H_2SO_4 solutions (Figure 7). These results are in good agreement with those obtained in O.C.P. measurements.

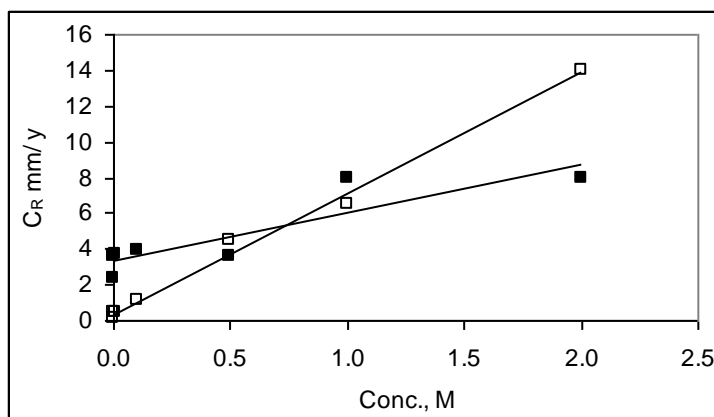


Figure (7): Corrosion rates vs. concentration for: \blacksquare H_2SO_4 and \square NaOH solutions

Energy dispersive X-ray analysis [EDX]:

It is important to take into consideration the percentages of elements present on the surface of the tin electrode. This was obtained from energy dispersive X-ray analysis (EDX) on Sn electrode in 1M of each of H_2SO_4 and NaOH solutions (Figures 8 and 9). The spectra showed that the percentages of elements present on the surface of tin electrode are as tabulated in Table (3).

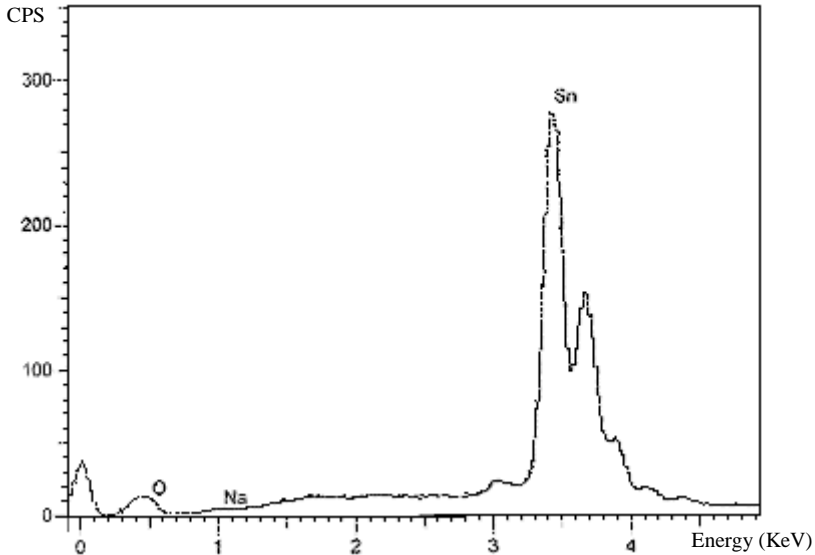


Figure (8): EDX spectra of Tin electrode in 1 M NaOH

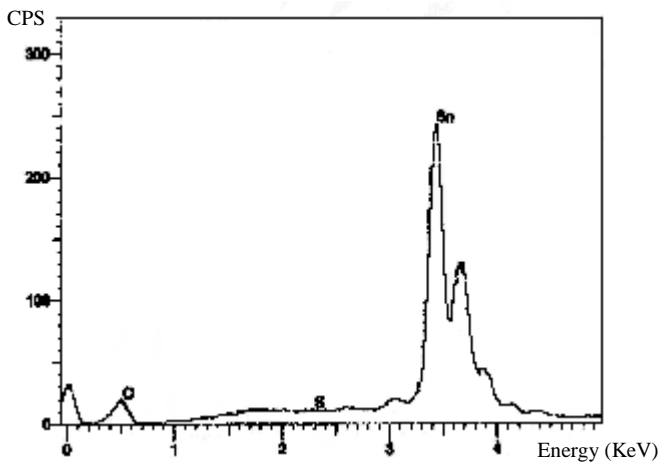


Figure (9): EDX spectra of Tin electrode in 1 M H_2SO_4

Table (3): The elements present on the surface of tin electrode

Media	Sn %	O ₂ %	S %	Na %
1 M NaOH	91.82	7.74	—	0.44
1 M H ₂ SO ₄	83.52	16.33	0.15	—

Conclusion

Tin is passivated in low concentrations of H₂SO₄ and NaOH solutions while at high concentrations, dissolution occurs in which the corrosivity of NaOH is higher than that of H₂SO₄ solutions. The studied solutions retard the corrosion of Sn as the concentration decreased and increase in concentration led to increasing the corrosion rates.

References

1. W.S. Jeon, C.C. Shur, J.G. Kim, S.Z. Han and Y.S. Kim; *J. Alloys and Compounds*, 455, (1-2), 2008, 358
2. M.A. Kiani, M.F. Mousavi, S. Ghasemi, M. Shamsipur and S.H. Kazemi; *Corrosion Science*, 50(4), 2008, 1035.
3. F. El-Taib Heakal, A.M. Fekry and A.A. Ghoneim; *Corrosion Science*, 50(6), 2008, 1618.
4. A. Pardo, M.C. Merino, M. Carboneras, F. Viejo and R. Arrabal, J. Muñoz; *Corrosion Science*, 48(5), 2006, 1075.
5. A.D. Pogrebnjak, Yu.A. Kravchenko, S.B. Kislitsyn, Sh.M. Ruzimov, F. Noli, P. Misaelides and A. Hatzidimitriou; *Surface and Coatings Technology*, 201(6), 2006, 2621.
6. D. López, C. Sánchez and A. Toro; *Wear*, 258, (1-4), 2005, 684.
7. J.R. Goldberg and J. L. Gilbert; *Biomaterials*, 25(5), 2004, 851.
8. *The New Caxton Encyclopedia*, Caxton publications limited London England part 18, 1983, 292.
9. C. Chiavari, A. Colledan, A. Frignani and G. Brunoro; *Materials Chemistry and Physics*, 95(2-3), 2006, 252.
10. Diez- Perez, F. Sanz and P. Gorostiza; *Current Opinion in Solid state and Materials Science*, 10 (3-4), 2007,144.
11. K.G. Gomma; *Energetics; Chemistry Earth Environmental and Biomedical Problems*, 50(1-3), 1995, 39.
12. C.M. Almeida, T. Raboczky and B. F. Giannetti; *J. Applied Electrochemistry*, 29(1), 1999,123.
13. S.S. Abd El-Rehim, S.M. Sayyah and M.M. El- Deeb; *Materials Chemistry and Physics*, 80(3), 2003, 696.

14. S. S. Abd El-Rehim, H. H. Hassan and N. F. Mohamed; *Corrosion Science*, 46(5), 2004, 1071.
15. E.E. Foad El-Sherbini; *J. Electroanalytical Chemistry*, 584(2), 2005, 167.
16. S. S. Abd El Rehim, A. M. Zaky and N. F. Mohamed; *J. Alloys and Compounds*, 424(1-2), 2006, 88.
17. R. M. Abou Shahba, A. S. I. Ahmed, E. M. Attia and A. E. El- Shennawy; *Al – Azhar Bulletin of Science*. 18(2), 2007, 47.
18. M. Jafarian, F. Gobal, I. Danaee, R. Biabani and M.G. Mahjani; *Electrochimica Acta*, 53(13), 2008, 4528.
19. Al-Suhybani and A. Abdulaziz; *Surface and Coatings Technology*, 34(4), 1988, 463.
20. O.M. Kuznetsova, G.S. Saprykina and T.A. Vostryakova; *Protection of Metals*, 13(1), 1977, 109.
21. A. Abdulaziz and Al-Suhybani; *British Corrosion J.*, 24(3), 1989, 204.
22. S. C. Britton and D. G. Michael; *J. Applied Chemistry*, 5, 1955, 1.
23. H. Barbre, C. Bagger and E. Maahn; *Electrochimica Acta*, 16, 1971, 559.
24. V. A. Khitrov and V. I. Shatalova; *Zhur. Priklad Khim.*, 34, 1961, 2106.
25. A. M. Shams El-Din and F. M. Abd El-Wahab; *Electrochimica Acta*, 9, 1964, 883.
26. R.O. Ansell, T. Dickinson, A.F. Povey and P.M.A. Sherwood; *J. Electrochemical Society*, 124(9), 1977, 1360.
27. E.H. Ait Addi, L. Bazzi, M. Elhilali, Zine El-Alami, R. Salghi, and El-Issami Souad; *Canadian J. Chemistry*, 81(4), 2003, 297.
28. E.H. Ait Addi, L. Bazzi, M. Elhilali, R. Salghi, B. Hammouti and M. Mihit.; *Applied Surface Science*, 253(2), 2006, 555.
29. U.R. Evans; "An Introduction to Metallic corrosion", 3rd Edition, Edward Arnold, London (1981).
30. M. Pourbaix; "Atlas of Electrochemical Equilibrium Diagrams in Aqueous solutions", NACE, Texas, 1966, 475.
31. M. Pugh, L. M. Warner and D. R. Gabe; *Corrosion Science*, 7, 1967, 807.
32. T. Ito and M. Abe; *Kogyo Kagaku Zasshi*, 63, 1960, 1699.
33. G. Gordon and C. H. Brubaker; *J. American Chemical Society*, 82, 1960, 4448.
34. M. Natesan and S. V. Iyer; *Key - Engineering-Materials*, 20-28(4), 1988, 531.
35. H. H. Hassan, S. S. Abd El-Rehim and N. F. Mohamed; *Corrosion Science*, 44(1), 2002, 37.

36. K. Salmi and G. Sundholm; J. Power Sources, 40(1-2), 1992,217.